

## PRODUCT LINE SHEET

### Representing

- Pryor Giggey Co.
- Allied Mineral Products
- Unifrax, LLC
- Delta Stud Weld, Inc.
- Alltherm
- BNZ Materials
- Reno / Reftech
- Sauereisen
- Pocono
- Belden Brick
- Mid Mountain Materials
- Quigley

### Manufactured Products

- DF<sup>®</sup> Modules, HC<sup>®</sup> Modules (Highly Compressed), QS<sup>®</sup> Modules, BN<sup>®</sup> (Bullnose) Modules ††
  - ◇ DF<sup>®</sup> Burner Block Module
  - ◇ DF<sup>®</sup> Peep Sight Module
  - ◇ Pre Cut Shadow Box Modules
  - ◇ Custom Sizes
- Pre-Fired Refractory Cast Shapes
  - ◇ Burner Blocks
  - ◇ Trough Liners
  - ◇ Ladle Liners (Drop-In)
  - ◇ Tap Hole Blocks
  - ◇ Pier Blocks
  - ◇ Induction Furnace Shapes
  - ◇ Furnace Jamb, Arches, Roofs, Walls & Hearths
  - ◇ Peep Doors & Frames
  - ◇ Custom Shapes
- Removable Blankets & Pads †
- Tube Seals / Boots †
- Die Cut Gaskets †
- Carbon Bake Furnace Components
  - ◇ Flue End Seals
  - ◇ Gas Injectors
  - ◇ Thermocouple Holders
  - ◇ Headwall Castings
  - ◇ Exhaust/Flue Port Covers, etc.
- Special Metal Fabrications



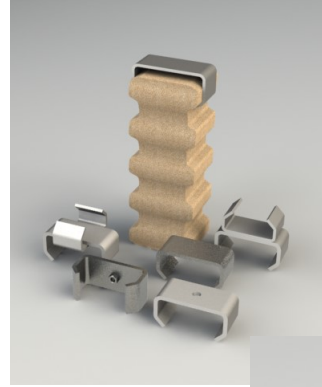
† Available in Non-Refractory Ceramic Fiber (Non-RCF)  
†† Custom Sizes & Densities available to suit job requirements

### Corporate Office

### Mailing Address

### ***Distributed & Resale Products***

- Acid Brick
- Fire Brick
- Insulating Firebrick (IFB)
- High Alumina Brick
- Refractory Anchors
- Full Line of Castables, Mortars, Gunning Mixes, Plastics & Rams, Pumpables.
- Ceramic Fiber
- Ceramic Fiber Spray
- Soluble Fiber Products (Non-Refractory Ceramic Fiber)
- High Temperature Cloths
- Coatings
- O<sub>2</sub> Lance Pipes
- Stainless Steel Fibers
- Corrosion Resistant Products



### ***Industries Served***

- Cement & Lime
- Chemical Processing
- Heat Treat & Forge
- Glass
- Incineration
- Iron & Steel
- Non-Ferrous Metals
- Pulp & Paper



#### **Corporate Office**

Ph: 281.391.1320 / Toll Free 800.430.2226

Fax: 281.391.2015

Web: <http://www.deltarefractories.com>

Email: [DRISales@deltarefractories.com](mailto:DRISales@deltarefractories.com)

#### **Mailing Address**

21557 Provincial Blvd  
Katy, Texas 77450