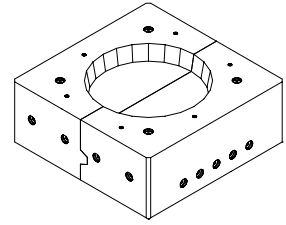


# Pre Cast Bottom Custom Order Sheet



## INSTRUCTIONS

1. **FILL OUT PERTINENT INFORMATION LOCATED ON THE RIGHT OF THE DRAWING.**
2. **DRAW BOLT HOLE PATTERN & DIMENSIONS ON TOP VIEW & BOTTOM VIEWS.**

## PLEASE FILL IN THE FOLLOWING INFORMATION

Furnace Type:

- Ajax \_\_\_\_\_ Lbs Furnace  
 Inducto \_\_\_\_\_ Lbs Furnace  
 Duraline \_\_\_\_\_ Lbs Furnace  
 Other, please specify \_\_\_\_\_

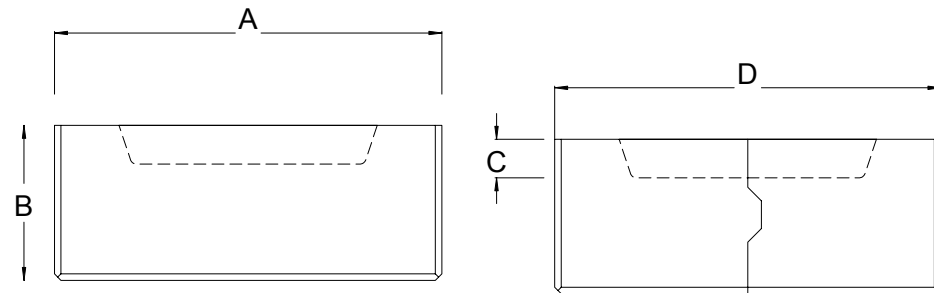
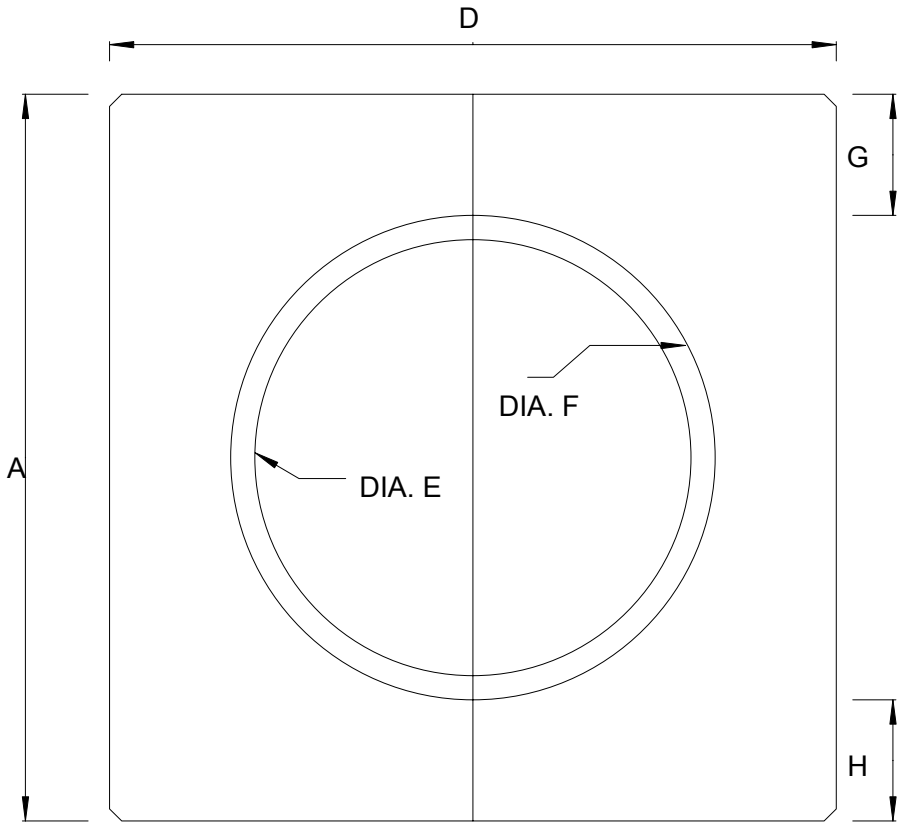
### DIMENSIONS

A		E	
B		F	
C		G	
D		H	

BOLT HOLE DIAMETER	TOP	
	SIDE	

NOTE: COUNTERSINKS ARE 1 1/2" DIA X 1/2" DEPTH (TYP.) BOTTOM SIDE EDGES AND SIDE CORNERS ARE CHAMFERED 1/2" AT 45 DEG. (TYP.)

PLEASE NOTE ANY CHANGES IF NEEDED.



## OFFICE USE ONLY

Material Used

Castable: \_\_\_\_\_

Needles

%: \_\_\_\_\_

Type: \_\_\_\_\_

Volume Needed: \_\_\_\_\_

DWG #: 107-\_\_\_\_\_ - \_\_\_\_\_

This drawing and all information is the property of Delta Refractories, Inc. It is confidential and given to you for a limited purpose. Neither this drawing nor any part of this document may be copied, exhibited, or furnished to others without the consent of Delta Refractories, Inc.