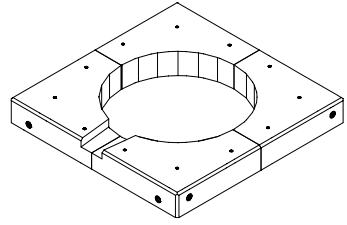


# Pre Cast Top Custom Order Sheet



## INSTRUCTIONS

1. FILL OUT PERTINENT INFORMATION LOCATED ON THE RIGHT OF THE DRAWING.
2. DRAW BOLT HOLE PATTERN & DIMENSIONS ON TOP VIEW & BOTTOM VIEWS.

## PLEASE FILL IN THE FOLLOWING INFORMATION

Furnace Type:

- Ajax \_\_\_\_\_ Lbs Furnace  
 Inducto \_\_\_\_\_ Lbs Furnace  
 Duraline \_\_\_\_\_ Lbs Furnace  
 Other, please specify \_\_\_\_\_

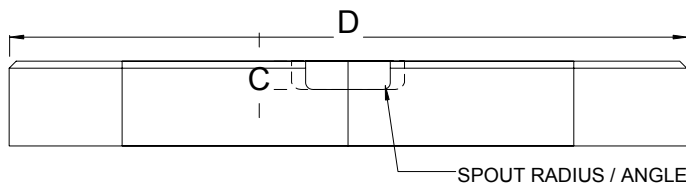
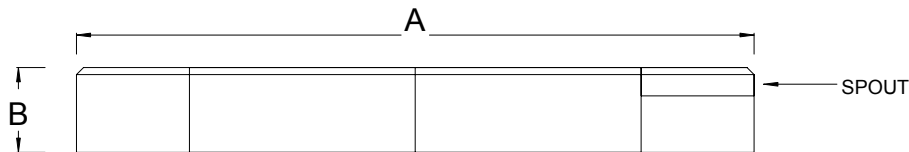
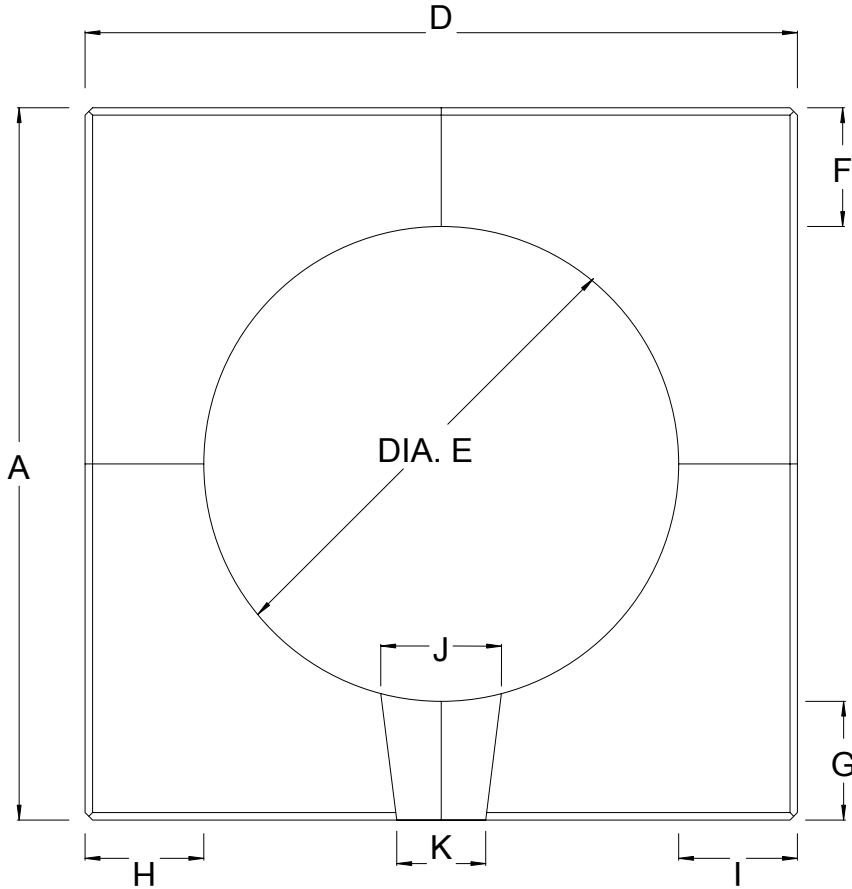
### DIMENSIONS

A	G
B	H
C	I
D	J
E	K
F	

BOLT HOLE DIAMETER	TOP	
	SIDE	

NOTE: COUNTERSINKS ARE 1 1/2" DIA X 1/2" DEPTH (TYP.) TOP SIDE EDGES AND SIDE CORNERS ARE CHAMFERED 1/2" AT 45 DEG. (TYP.)

PLEASE NOTE ANY CHANGES IF NEEDED.



## OFFICE USE ONLY

Material Used

Castable: \_\_\_\_\_

Needles

%: \_\_\_\_\_

Type: \_\_\_\_\_

Volume Needed: \_\_\_\_\_

DWG #: 107- \_\_\_\_\_ - \_\_\_\_\_

This drawing and all information is the property of Delta Refractories, Inc. It is confidential and given to you for a limited purpose. Neither this drawing nor any part of this document may be copied, exhibited, or furnished to others without the consent of Delta Refractories, Inc.