

PRODUCT LINE SHEET

Representing

- Adrian Scott Industries
- Unifrax, LLC
- Delta Stud Weld, Inc.
- Alltherm
- BNZ Materials
- RESCO Products
- Reno / Reftech
- Sauereisen
- Pocono
- Belden Brick
- Nutec

Manufactured Products

- DF[®] Modules, HC[®] Modules (Highly Compressed), QS[®] Modules, BN[®] (Bullnose) Modules ††
 - ◇ DF[®] Burner Block Module
 - ◇ DF[®] Peep Sight Module
 - ◇ Pre Cut Shadow Box Modules
 - ◇ Custom Sizes
- Pre-Fired Refractory Cast Shapes
 - ◇ Burner Blocks
 - ◇ Trough Liners
 - ◇ Ladle Liners (Drop-In)
 - ◇ Tap Hole Blocks
 - ◇ Pier Blocks
 - ◇ Induction Furnace Shapes
 - ◇ Furnace Jamb, Arches, Roofs, Walls & Hearths
 - ◇ Peep Doors & Frames
 - ◇ Custom Shapes
- Removable Blankets & Pads †
- Tube Seals / Boots †
- Die Cut Gaskets †
- Carbon Bake Furnace Components
 - ◇ Flue End Seals
 - ◇ Gas Injectors
 - ◇ Thermocouple Holders
 - ◇ Headwall Castings
 - ◇ Exhaust/Flue Port Covers, etc.
- Special Metal Fabrications



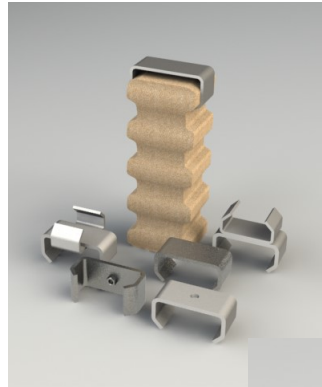
† Available in Non-Refractory Ceramic Fiber (Non-RCF)
†† Custom Sizes & Densities available to suit job requirements

Corporate Office

Mailing Address

Distributed & Resale Products

- Acid Brick
- Fire Brick
- Insulating Firebrick (IFB)
- High Alumina Brick
- Refractory Anchors
- Full Line of Castables, Mortars, Gunning Mixes, Plastics & Rams, Pumpables.
- Ceramic Fiber
- Ceramic Fiber Spray
- Soluble Fiber Products (Non-Refractory Ceramic Fiber)
- High Temperature Cloths
- Coatings
- O₂ Lance Pipes
- Stainless Steel Fibers
- Corrosion Resistant Products



Industries Served

- Cement & Lime
- Chemical Processing
- Heat Treat & Forge
- Glass
- Incineration
- Iron & Steel
- Non-Ferrous Metals
- Pulp & Paper



Corporate Office

Mailing Address